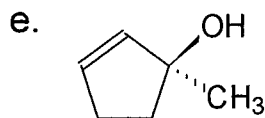
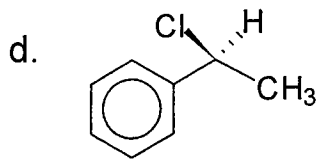
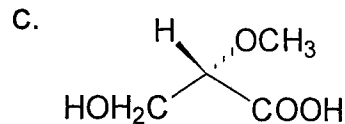
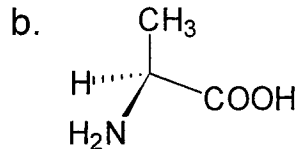
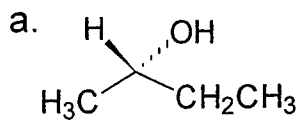
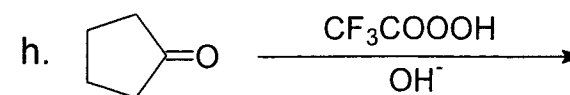
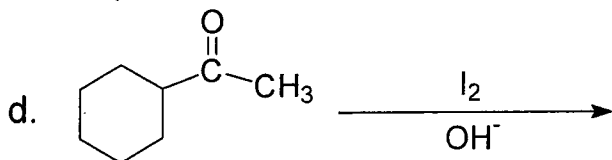
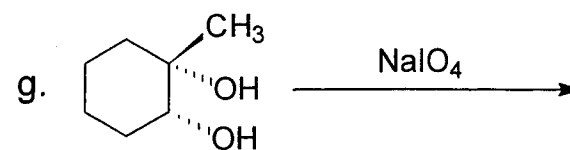
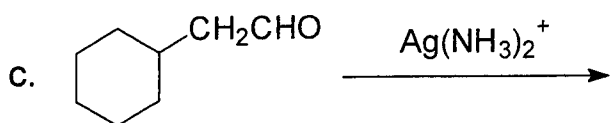
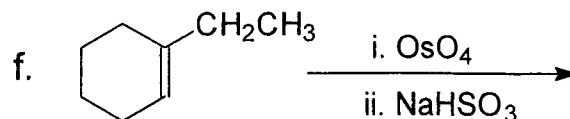
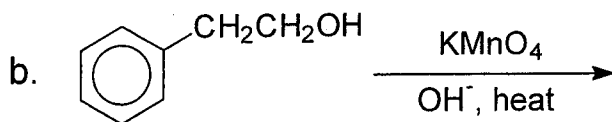
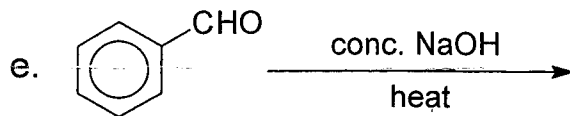
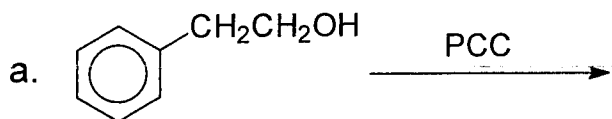


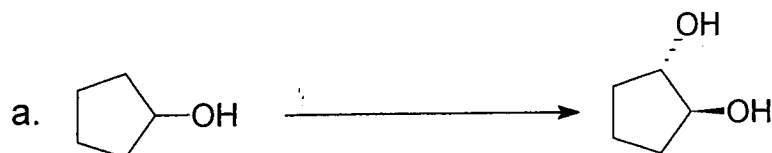
I. Assign R or S configurations to the chirality center in the following molecules. (2 pts each; 10 pts total)



II. Reactions. (4 pts each; 32 pts total)



III. Synthesis. (8 pts each; 8 pts total)



本試題採  
双面印刷

第 / 頁共 2 頁

系所組：化學系應用化學碩士班

日期節次：100年3月20日第1節 09:00-10:30

科目：有機化學與分析化學

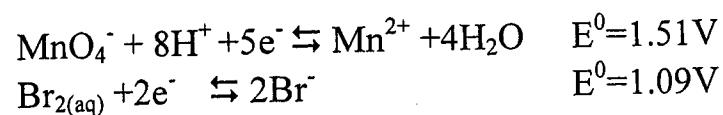
## 二、分析化學(50%)

1.(30%,每一小題 3%)解釋下列名詞

- |                        |                           |
|------------------------|---------------------------|
| a. PH                  | f. EDTA                   |
| b. Nernst equation     | g. NMR                    |
| c. Beer's law          | h. Van Deemter equation   |
| d. Analytical molarity | i. Accuracy               |
| e. Buffer              | j. Le Châtelier Principle |

2.(5%)請由比重 1.18 的 37%(w/w) HCl(分子量 36.5g/mol)溶液配製 100ml 的 6.0M HCl 溶液。

3.(5%)由下列二半反應電位,計算全反應電位與平衡常數。



4.(5%)於 AA 測試中,使用火焰法,石墨爐法與氫化物產生法,其各別優缺點為何?

5.(5%)電腦的發明,對儀器分析進步發展為何?

本 試 題 採  
雙 面 印 刷

第 2 頁 共 2 頁